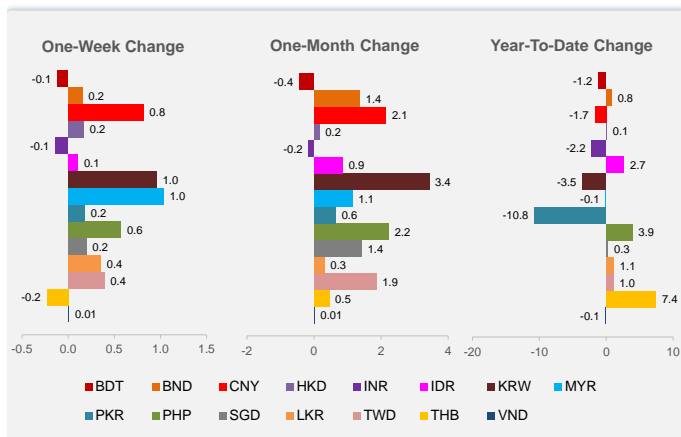
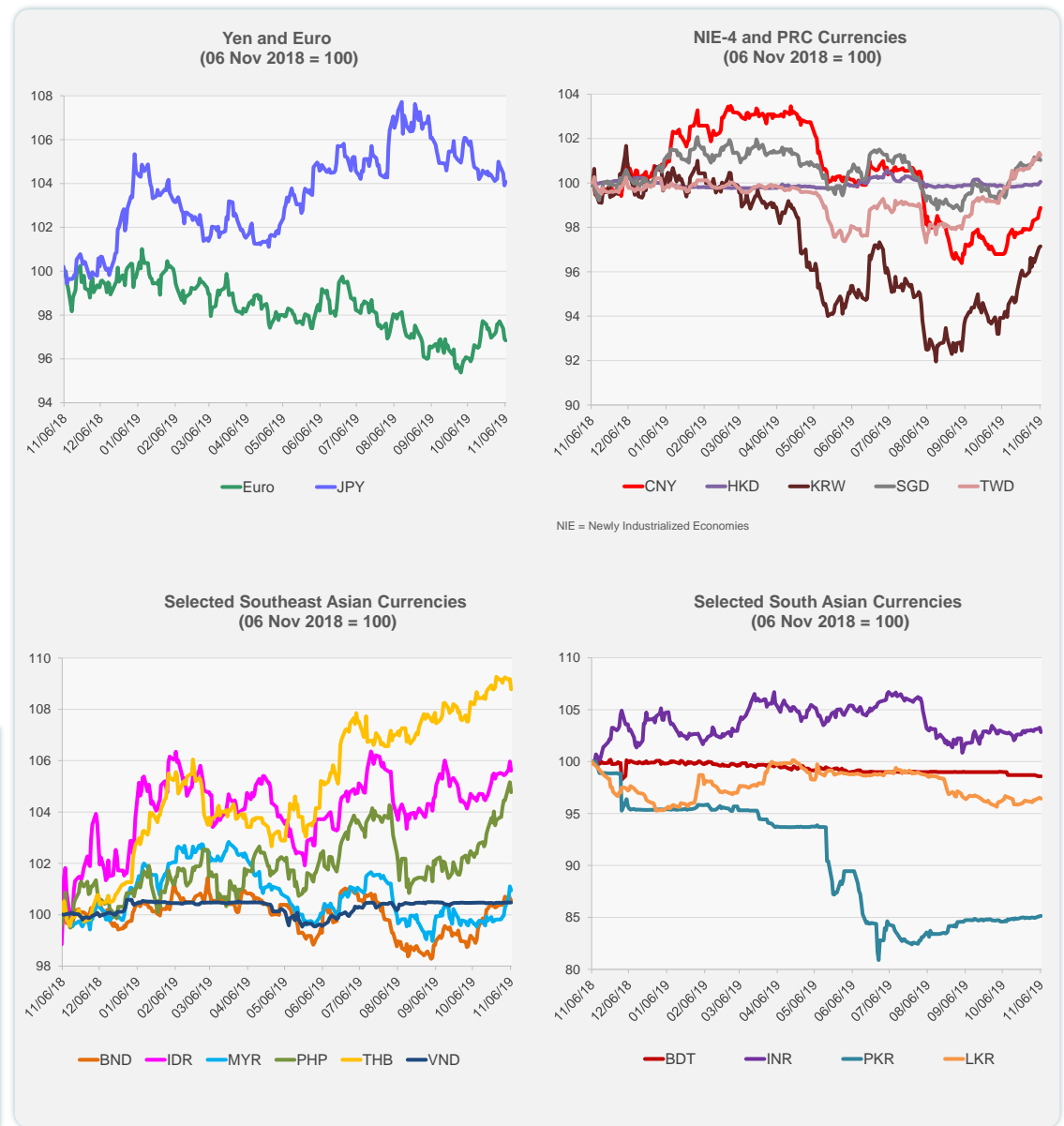


| | Latest Closing | % change from Previous Day | % change from 01-Jan-19 |
|------------------------------|----------------|----------------------------|-------------------------|
| Euro | 0.90 | -0.08 | -3.48 |
| Japanese yen (JPY) | 108.98 | 0.17 | 0.70 |
| Bangladeshi taka (BDT) | 84.88 | -0.01 | -1.18 |
| Brunei dollar (BND) | 1.36 | -0.12 | 0.79 |
| Chinese yuan (CNY) | 7.00 | 0.17 | -1.71 |
| Hong Kong dollar (HKD) | 7.83 | 0.07 | 0.06 |
| Indian rupee (INR) | 70.99 | -0.43 | -2.20 |
| Indonesian rupiah (IDR) | 14,018.00 | -0.34 | 2.65 |
| Korean won (KRW) | 1,156.90 | 0.05 | -3.55 |
| Malaysian ringgit (MYR) | 4.14 | -0.16 | -0.10 |
| Pakistan rupee (PKR) | 155.60 | 0.03 | -10.75 |
| Philippine peso (PHP) | 50.61 | -0.38 | 3.89 |
| Singapore dollar (SGD) | 1.36 | -0.08 | 0.28 |
| Sri Lanka rupee (LKR) | 180.80 | -0.09 | 1.13 |
| Taipei,China NT dollar (TWD) | 30.40 | -0.11 | 1.04 |
| Thai baht (THB) | 30.30 | -0.37 | 7.42 |
| Vietnamese dong (VND) | 23,200.00 | 0.00 | -0.11 |

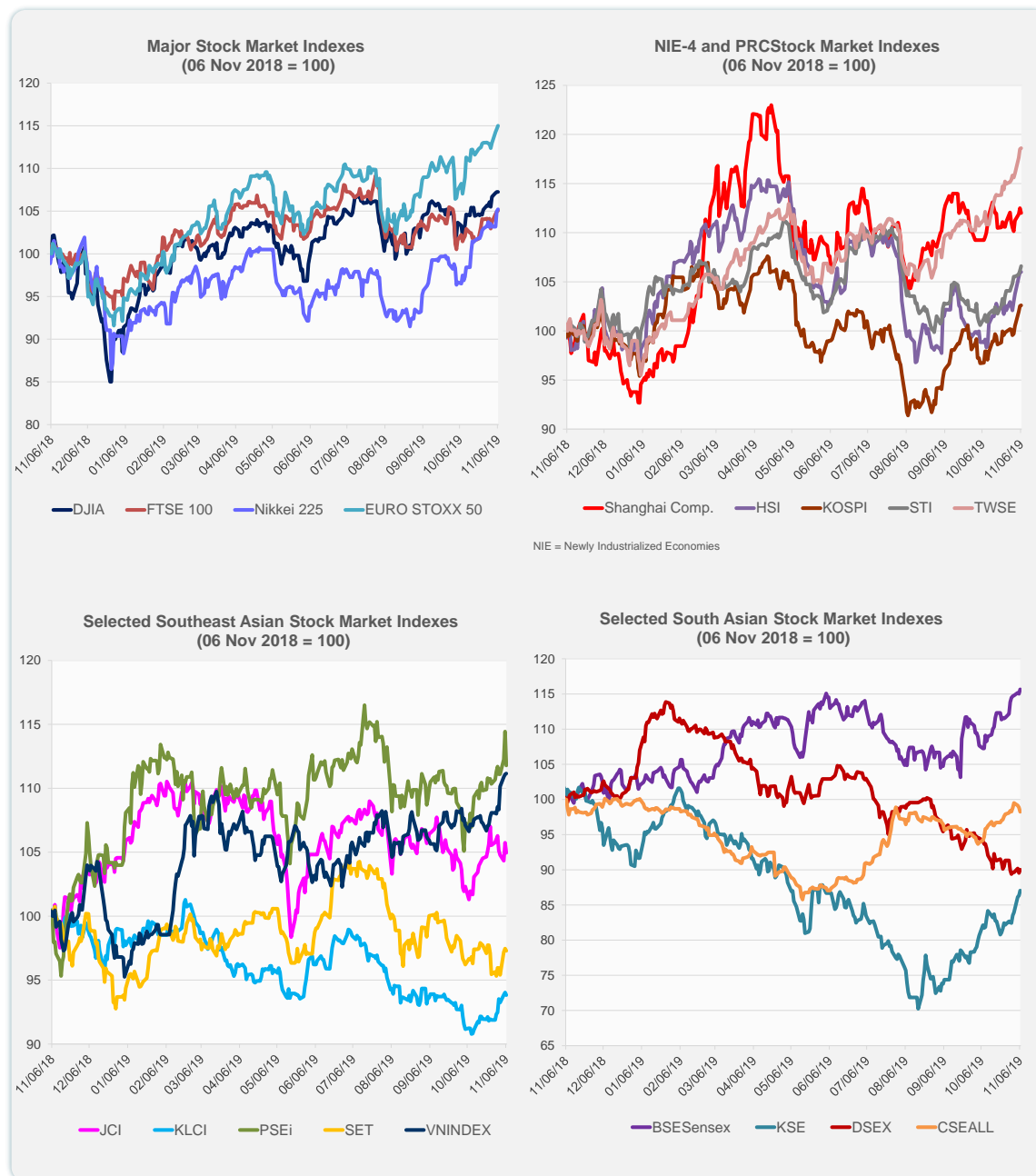
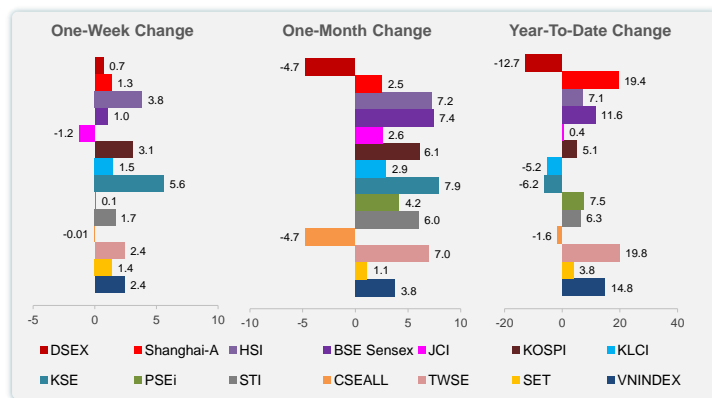


Note: Negative/Decreasing values indicate depreciation of local currency, and positive/increasing values indicate appreciation.
Source: Bloomberg.

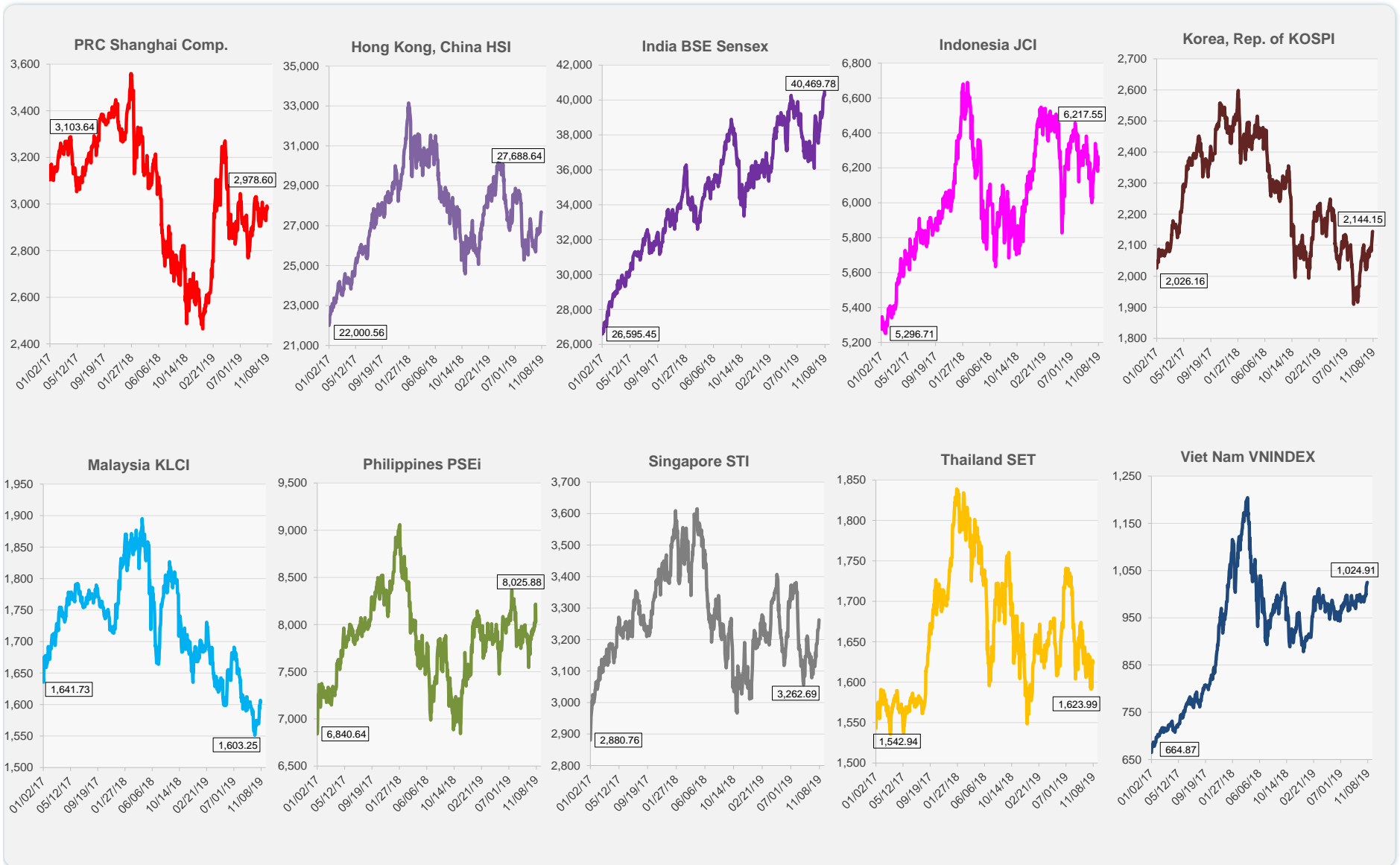


Source: Bloomberg.

| | Latest Closing | % change from Previous Day | % change from 01-Jan-19 |
|----------------------|----------------|----------------------------|-------------------------|
| US Dow Jones Ind Avg | 27,492.56 | 0.00 | 17.85 |
| US NASDAQ | 8,410.63 | -0.29 | 26.76 |
| US S&P 500 | 3,076.78 | 0.07 | 22.73 |
| UK FTSE 100 | 7,396.65 | 0.12 | 9.94 |
| EURO STOXX 50 | 3,688.74 | 0.33 | 22.90 |
| Japan NIKKEI 225 | 23,303.82 | 0.22 | 16.43 |
| Bangladesh DSEX | 4,703.70 | 0.54 | -12.66 |
| PRC Shanghai Comp. | 2,978.60 | -0.43 | 19.44 |
| Hong Kong, China HSI | 27,688.64 | 0.02 | 7.13 |
| India BSE Sensex | 40,469.78 | 0.55 | 11.63 |
| Indonesia JCI | 6,217.55 | -0.74 | 0.37 |
| Korea, Rep. of KOSPI | 2,144.15 | 0.07 | 5.05 |
| Malaysia KLCI | 1,603.25 | -0.22 | -5.17 |
| Pakistan KSE 100 | 35,653.33 | 0.83 | -6.16 |
| Philippines PSEi | 8,025.88 | -2.32 | 7.50 |
| Singapore STI | 3,262.69 | 0.43 | 6.32 |
| Sri Lanka CSEALL | 5,956.52 | -0.62 | -1.58 |
| Taipei, China TWSE | 11,653.07 | 0.08 | 19.80 |
| Thailand SET | 1,623.99 | -0.18 | 3.84 |
| Viet Nam VNINDEX | 1,024.91 | 0.06 | 14.83 |



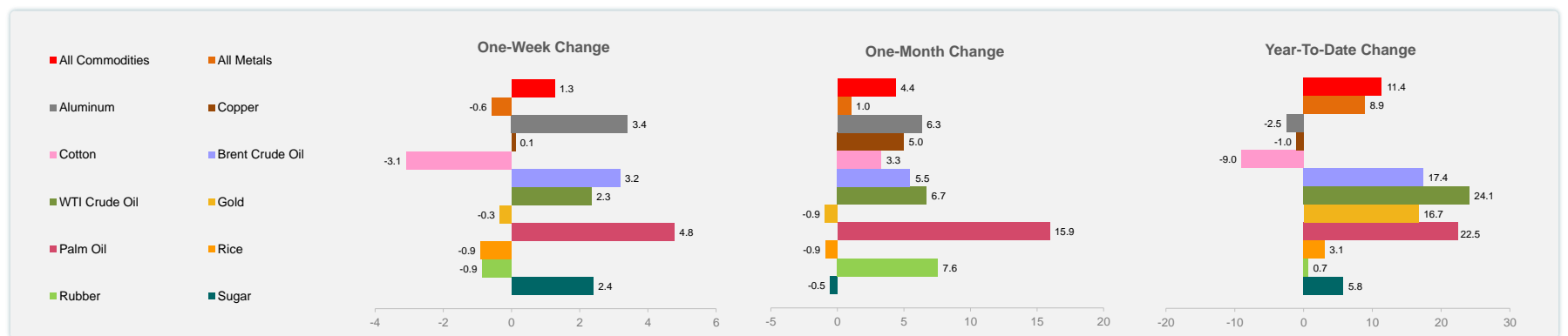
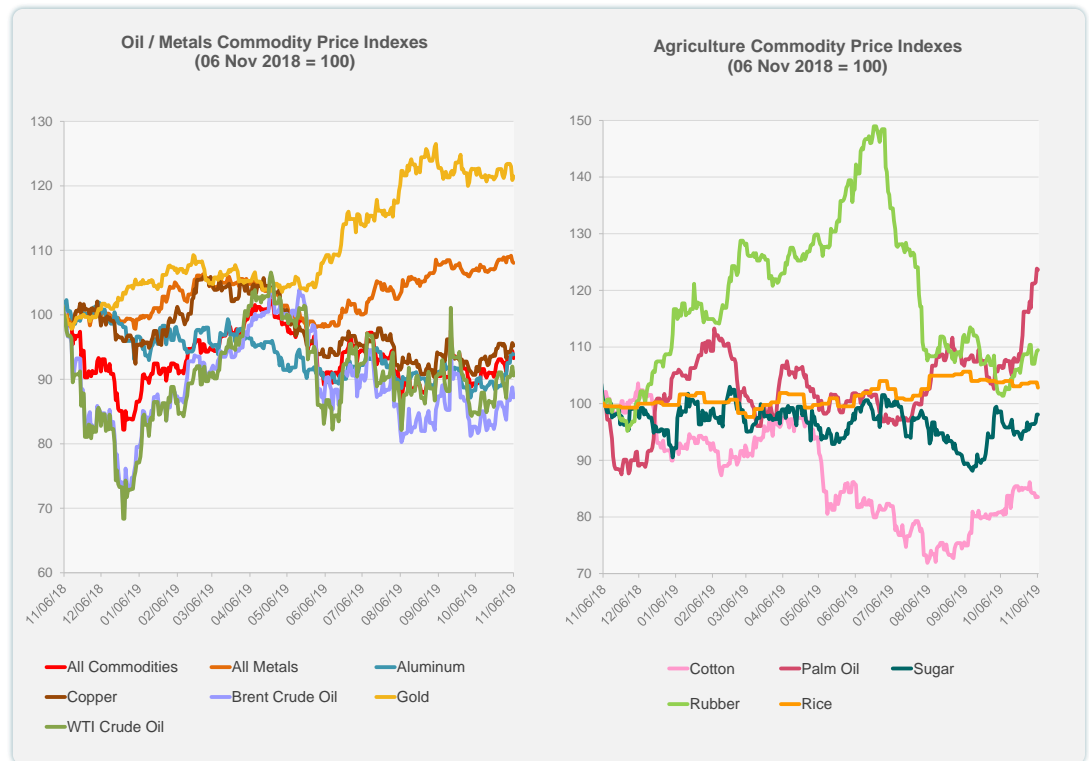
Source: Bloomberg.



Source: Bloomberg.

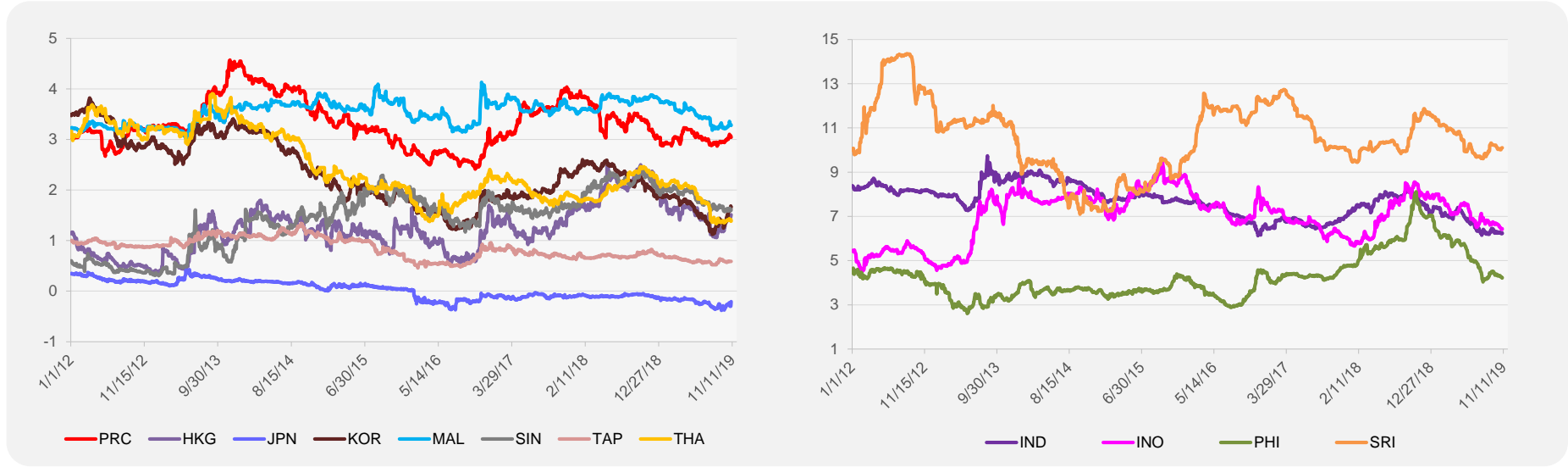
| | Unit | Latest Closing | % change from Previous Day | % change from 01-Jan-19 |
|---------------------|-------------------|----------------|----------------------------|-------------------------|
| S&P All Commodities | US\$ | 416.93 | -1.18 | 11.38 |
| S&P All Metals | US\$ | 222.42 | -0.21 | 8.90 |
| Aluminum | US\$/metric ton | 1,816.25 | -0.04 | -2.50 |
| Copper | US\$/metric ton | 5,888.50 | -0.43 | -1.02 |
| Cotton | US cents/lb | 63.19 | -0.19 | -9.01 |
| Brent Crude Oil | US\$/barrel | 62.01 | -1.77 | 17.40 |
| WTI Crude Oil | US\$/barrel | 56.35 | -1.54 | 24.09 |
| Gold | US\$/troy oz | 1,490.61 | 0.48 | 16.72 |
| Palm Oil | US\$/metric tonne | 578.49 | -0.16 | 22.47 |
| Rice ¹ | US\$/metric ton | 437.00 | -0.91 | 3.07 |
| Rubber ² | US\$/kg | 149.50 | 0.13 | 0.67 |
| Sugar | US cents/lb | 12.82 | 0.00 | 5.78 |

¹ Latest closing price from 6 November 2019.
² Singapore Exchange, Ribbed Smoked Sheet Rubber.

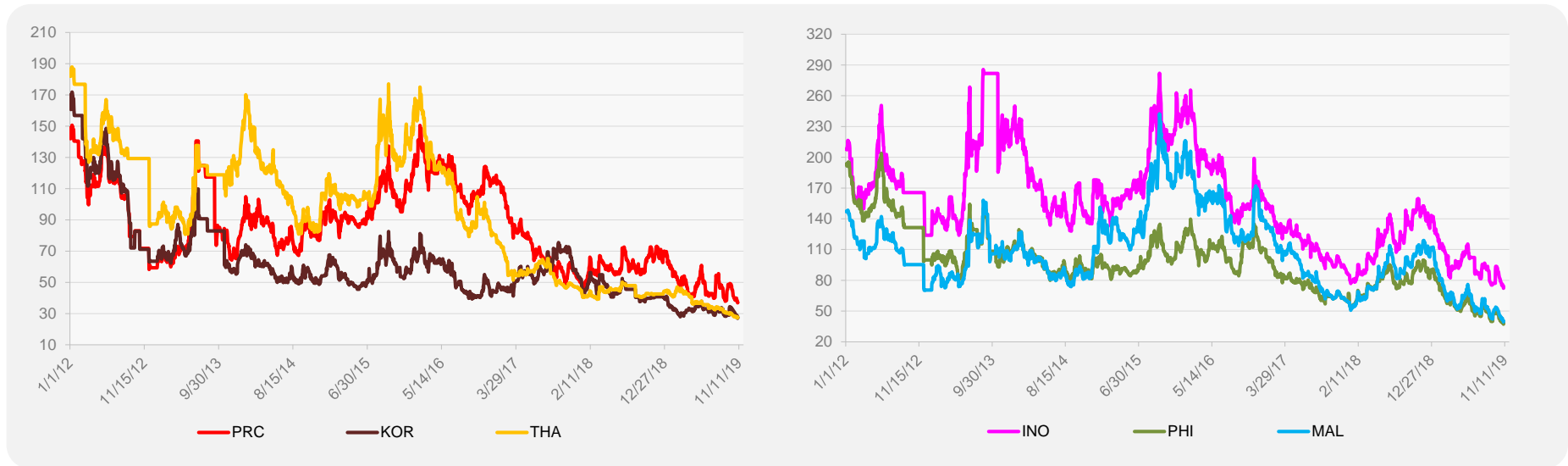


Source: Bloomberg.

5-YEAR LOCAL CURRENCY GOVERNMENT BOND YIELDS (%)



5-YEAR CREDIT DEFAULT SWAP¹



¹ In USD and based on sovereign bonds.
Source: Bloomberg.